

# Computer Labs & Lecterns: Fall 2013

*Statistics Using LabStats & Pharos Reports*

Alexander Roessner, IT Classroom Technologies  
The University of New Mexico

## Introduction

Below are a series of reports generated by LabStats and Pharos Reports for the Fall 2013 semester (8/19/2013 thru 12/14/2013). These reports cover a range of topics including usage times (both computer labs and lecterns), application usage, and pages printed via Pharos.

The standard usage information provided by LabStats is more related to energy spent (utilization of resources), so in an effort to simplify depiction of usage, the following charts will use the amount of individual logins, rather than resource utilization, to indicate a lab or lectern's usage.

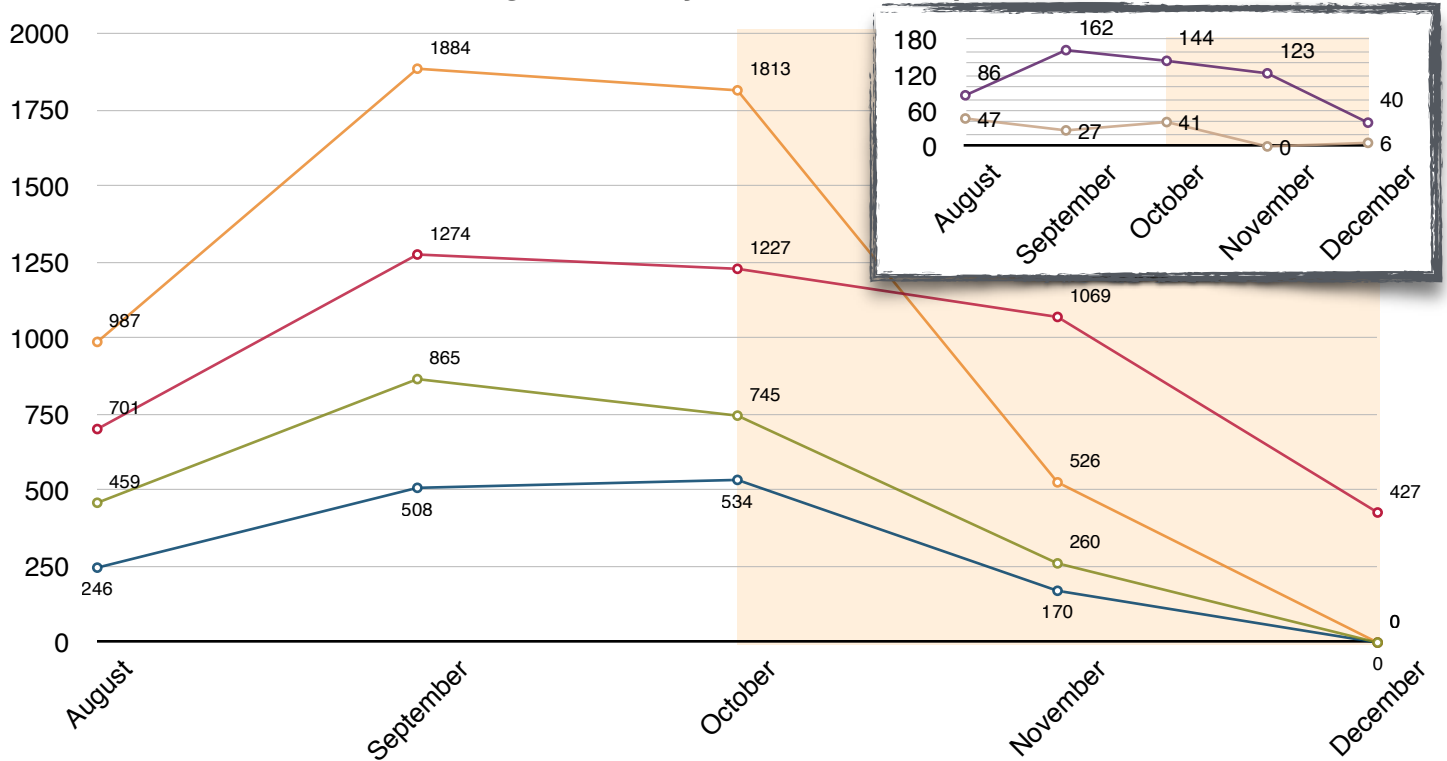
## Usage: Lecterns

### Usage by Individual Logins

The following chart shows the total amount of individual logins monthly for computers defined as lecterns in UNM buildings around campus during the Fall 2013 semester. The **orange** shaded half of the chart represents that during the fall semester, and due to slow startup times, local logins were created to aid those boot times.

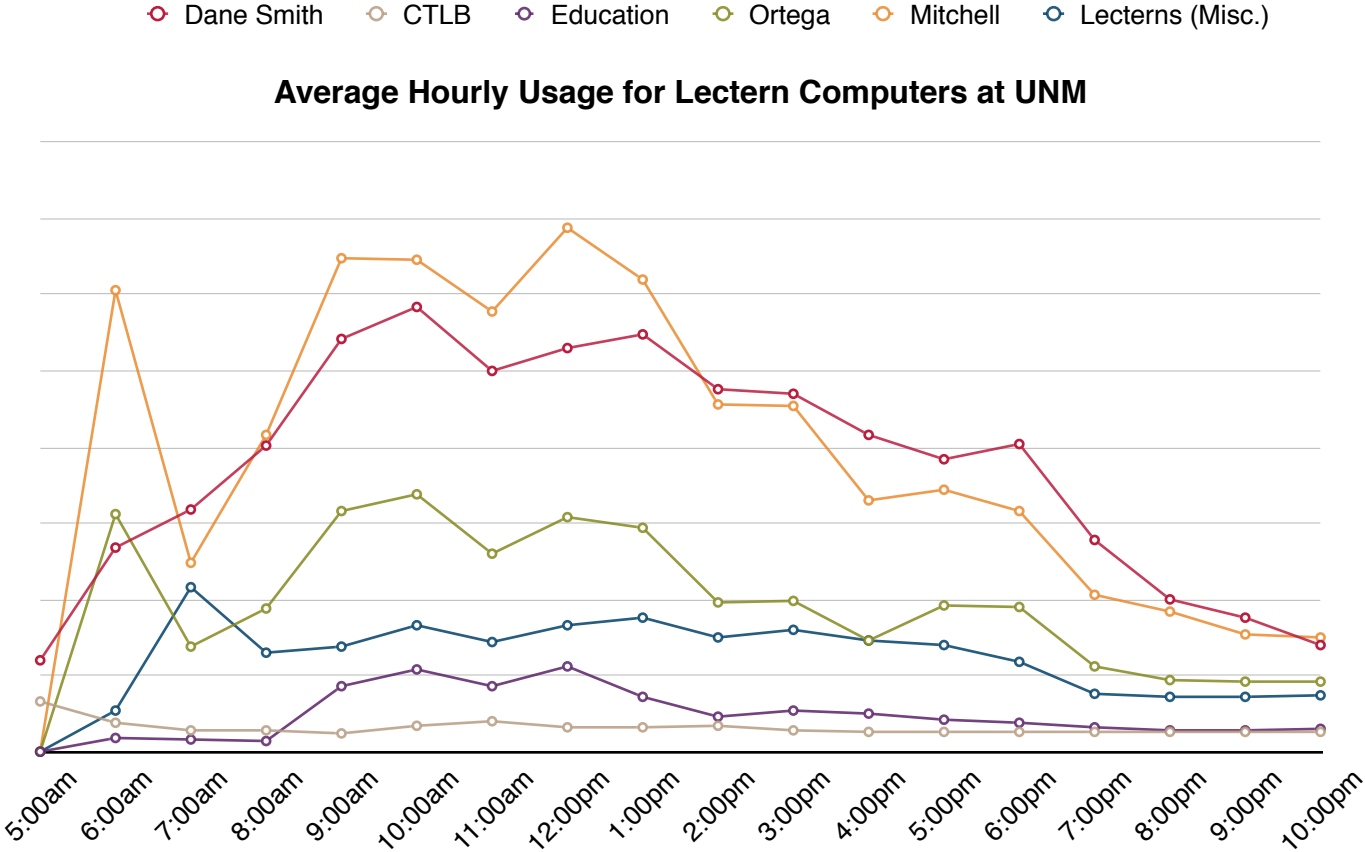
○ Dane Smith   ○ CTLB   ○ Education   ○ Ortega   ○ Mitchell   ○ Lecterns (Misc.)

**Individual Logins Monthly on Lectern Computers at UNM**



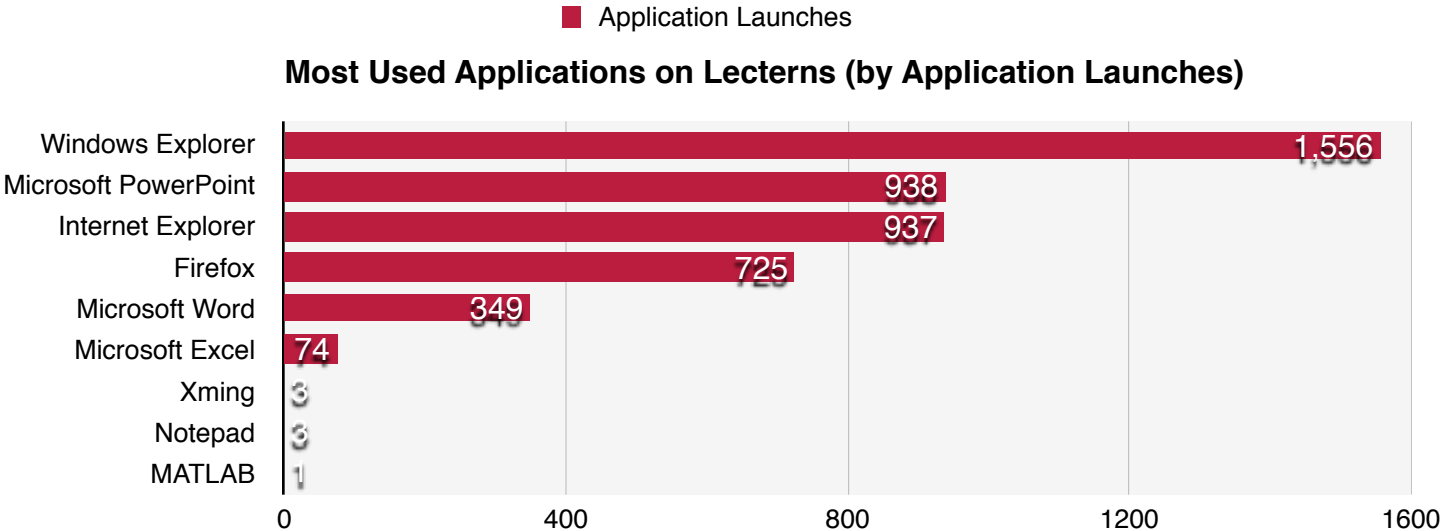
Dane Smith and Mitchell Hall both have the most utilized lecterns on campus. As would be expected, August and December are the least utilized months for all lecterns – both are cut short as the beginning and end of the semesters occur around the middle of the month, and less lecturing is done in December as finals are being taken.

In order to get a more granular look at lectern usage, below is a chart showing the most active login times for the lectern machines at UNM during the Fall 2013 semester.



Usage by Application

Below is a chart of the most used applications for the semester by the machines designated as lecterns. Windows Explorer is the most popular application, most likely because faculty are loading files off USB drives.



## Usage: Computer Labs

### Usage by Individual Logins

The following tables show the total amount of individual logins during Fall 2013 semester by combined computer lab, ordered by popularity. For example, the combined environment of LoboLab would be Macs, PCs, and a classroom in that lab. **Green** indicates maximum values. **Red** indicates minimum values for each column.

### Combined Environments

Computer Lab (Combined)	Percentage of Labs Utilized	Number of Logins	Number of Computers	Average Login Per Computer
LoboLab	27.79%	42,877	114	376
Dane Smith Hall (DSH)	20.66%	31,890	170	188
Engineering & Science (ESC) (South)	10.20%	15,737	69	228
Engineering & Science (ESC) (North)	9.02%	13,915	56	248
Communication & Journalism (C&J)	6.80%	10,500	46	228
Mitchell Hall	6.02%	9,291	29	320
Science & Math Learning Center (SMLC)	3.58%	5,525	50	111
IT Lab	1.53%	2,358	24	98

### Individual Environments

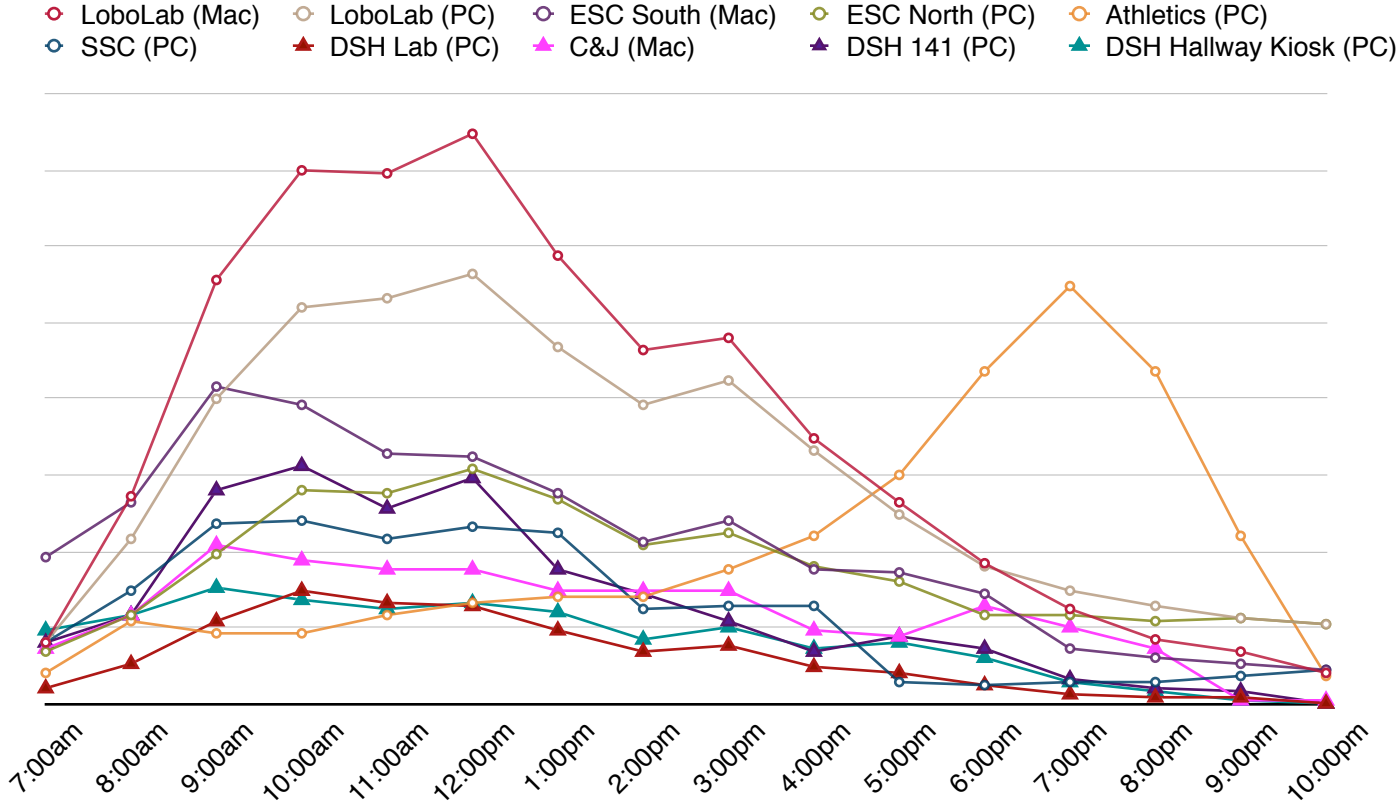
Computer Lab (Individual)	Percentage of Labs Utilized	Number of Logins	Number of Computers	Average Login Per Computer
Athletics	4.44%	6,853	73	94
Student Services Center (SSC)	4.24%	6,542	26	252
Johnson	3.42%	5,279	16	330
Graduate Resource Center	0.86%	1,320	17	78
Economics	0.68%	1,047	12	87

The following table shows the total amount of individual logins during Fall 2013 semester by computer lab, broken down by type (Mac or PC), and ordered by popularity. **Green** indicates maximum values. **Red** indicates minimum values for each column.

Computer Lab (by Type of Computer)	Percentage of Labs Utilized	Number of Logins	Number of Computers	Average Login Per Computer
LoboLab (Mac)	13.98%	21,569	43	502
LoboLab (PC)	9.64%	14,874	34	437
ESC South (Mac)	9.13%	14,092	48	294
ESC North (PC)	5.04%	7,772	20	389
Athletics (PC)	4.44%	6,853	73	94
SSC (PC)	4.24%	6,542	26	252
DSH Lab (PC)	3.89%	6,002	10	600
C&J (Mac)	3.89%	6,003	22	273
DSH 141 (PC)	3.73%	5,757	51	113
DSH Hallway Kiosk (PC)	3.72%	5,744	13	442
Johnson (Mac)	3.42%	5,279	16	330
DSH 144 (Mac)	3.32%	5,115	26	197
Mitchell 116 (PC)	3.29%	5,075	23	221
LoboLab Classroom (PC)	3.13%	4,824	29	166
DSH 143 (PC)	3.09%	4,775	26	184
C&J (PC)	2.91%	4,497	24	187
Mitchell Hallway Kiosk (PC)	2.73%	4,216	6	703
DSH Lab (Mac)	2.43%	3,754	26	144
SMLC B59 (PC)	2.40%	3,701	25	148
ESC North (Mac)	2.12%	3,273	15	218
ESC 110 (PC)	1.86%	2,870	21	137
SMLC B81 (PC)	1.18%	1,824	25	73
ESC 109 (Mac)	1.07%	1,645	21	78
IT Lab (PC)	1.07%	1,646	14	118
LoboLab Hallway Kiosk (PC)	1.04%	1,610	8	201
Graduate Resource Center (Mac & PC)	0.86%	1,320	17	78
Economics (PC)	0.68%	1,047	12	87
DSH 224 (PC)	0.48%	743	18	41
IT Lab (Mac)	0.46%	712	10	71

LoboLab (located in the Student Union Building) ranks as the top location for computer lab usage for the Fall 2013 semester, probably due to the lab being in the area with arguably the most foot traffic on campus. The graph on the next page will show more granularity with when these labs are being utilized.

The following graph is a daily, hourly breakdown of average login history for the top ten computer labs during the Fall 2013 semester.



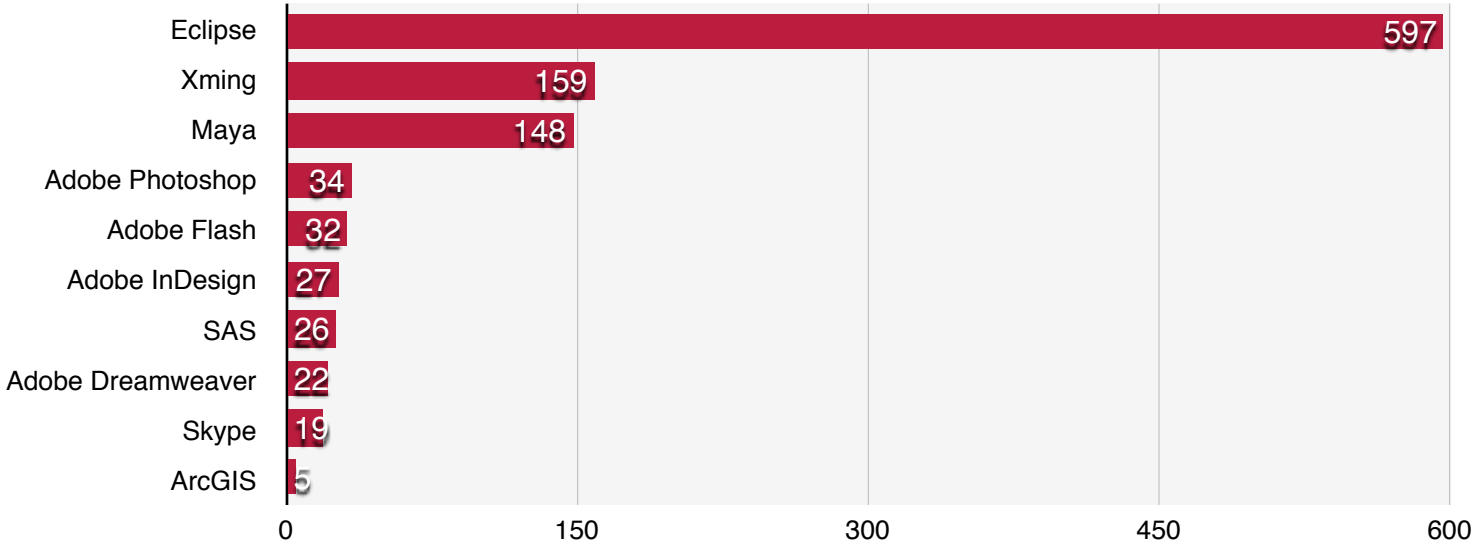
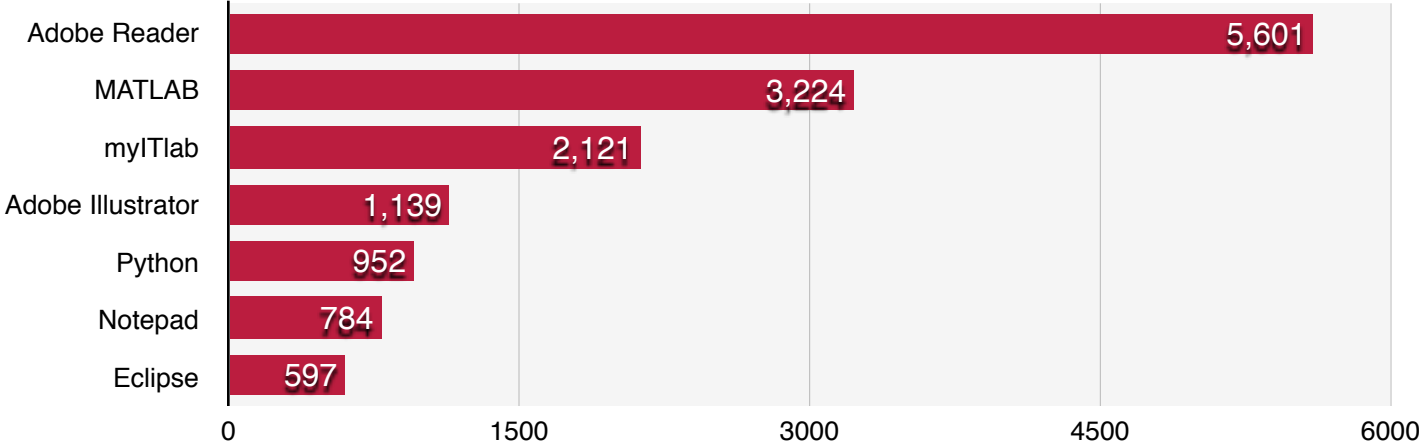
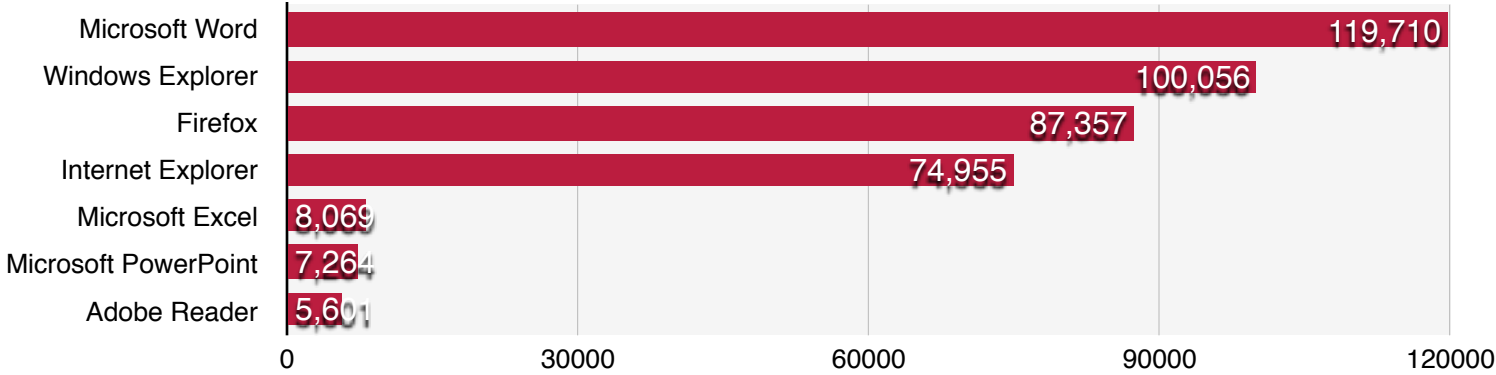
As can be seen, the most active usage of these computer labs is from 8:00am to about 2:00pm. There's also a noticeable pickup in Athletics' usage in the evening.

Usage by Application

Below is a chart of the most used applications for the semester by the machines designated as computer labs. The chart will be broken up into three scales as to better show the granularity of the data.

■ Application Launches

**Most Used Applications in Labs (by Application Launches)**

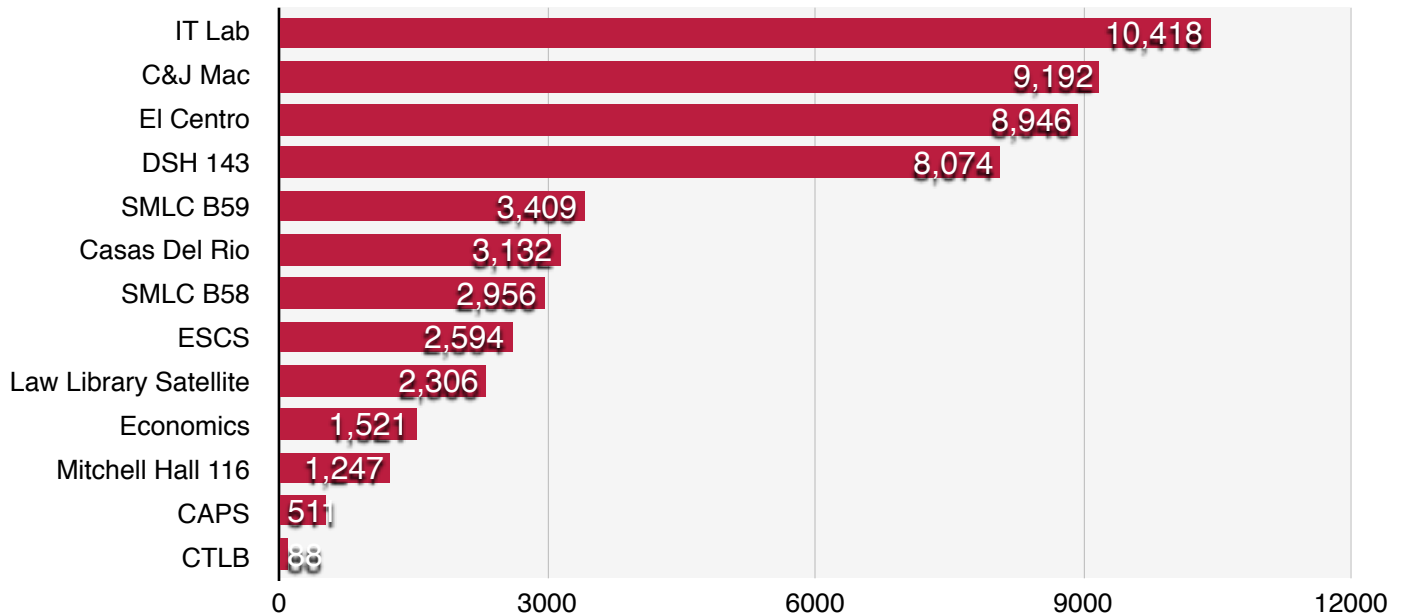
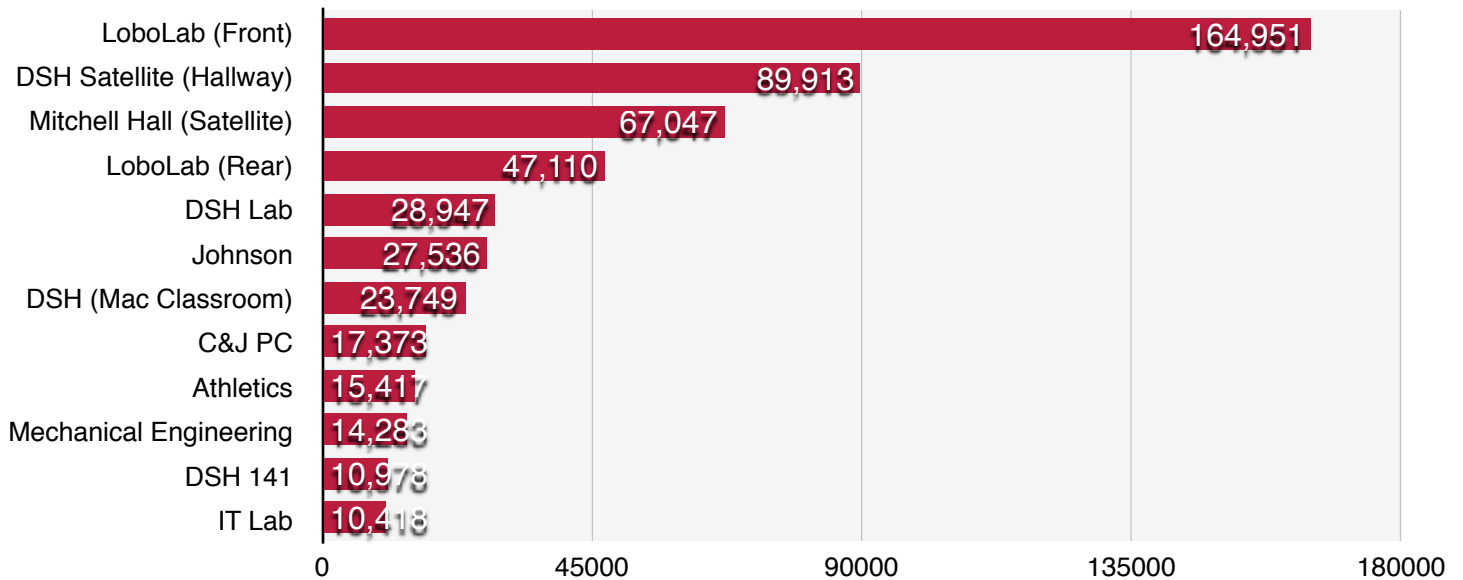


## PawPrints Usage (Pharos Printing Service)

Below is a chart summarizing the total pages printed during the Fall 2013 semester by printer. Since this period, we have added a few more printers, including a color printer, whose statistics will be shown in a later report. Decommissioned printers (such as Lobo Satellite, where the color printer was placed, or Travelstead) cannot be reported as they were removed from the system.

■ Pages Printed

### Pages Printed by Individual Printer





The following is a more detailed breakdown of each printer's output, including number of jobs, total pages, total sheets, and total amount charged. Decommissioned printers) cannot be reported as they were removed from the system. **Green** indicates maximum values. **Red** indicates minimum values for each column.

Printer	Jobs	Total Pages	Total Sheets	Amount Charged
LoboLab (Front)	33,419	164,951	105,915	\$7,035.30
DSH Satellite (Hallway)	18,612	89,913	54,038	\$3,774.90
Mitchell Hall (Satellite)	15,912	67,047	41,171	\$2,831.23
LoboLab (Rear)	9,401	47,110	28,846	\$1,986.38
DSH Lab	5,360	28,947	17,772	\$1,221.59
Johnson	5,806	27,536	17,641	\$1,159.61
DSH (Mac Classroom)	4,801	23,749	15,084	\$1,012.74
C&J PC	4,275	17,373	10,743	\$734.99
Athletics	3,734	15,417	9,375	\$648.87
Mechanical Engineering	3,387	14,283	9,048	\$606.35
DSH 141	2,823	10,978	6,969	\$467.98
IT Lab	1,384	10,418	6,206	\$436.40
C&J Mac	2,486	9,192	6,300	\$400.19
El Centro	2,050	8,946	5,584	\$379.19
DSH 143	1,689	8,074	5,027	\$342.35
SMLC B59	747	3,409	2,035	\$142.92
Casas Del Rio	733	3,132	2,102	\$135.68
SMLC B58	902	2,956	1,895	\$126.02
ESCS	532	2,594	1,712	\$112.06
Law Library Satellite	161	2,306	1,223	\$93.64
Economics	370	1,521	996	\$65.55
Mitchell Hall 116	385	1,247	785	\$53.06
CAPS	138	511	318	\$21.69
CTLB	29	88	67	\$3.98
<b>Total:</b>	<b>119,136</b>	<b>561,698</b>	<b>350,852</b>	<b>\$23,792.67</b>