



Computer Labs & Lecterns: Spring 2014

Statistics Using LabStats & Pharos Reports

Alexander Roessner, IT Classroom Technologies
The University of New Mexico

Introduction

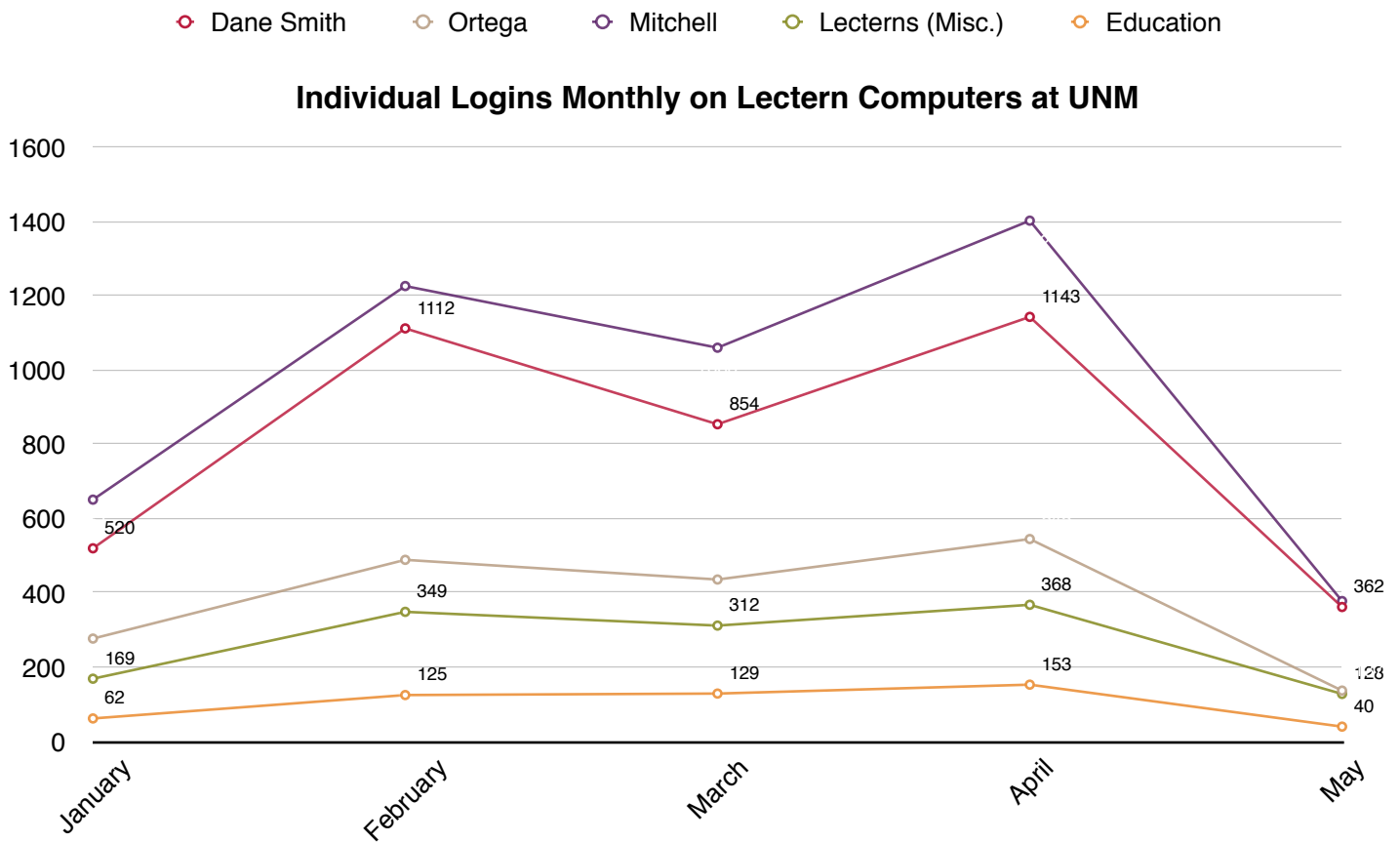
Below are a series of reports generated by LabStats and Pharos Reports for the Spring 2014 semester (1/20/2014 thru 5/09/2014). These reports cover a range of topics including usage times (both computer labs and lecterns), application usage, and pages printed via PawPrints (Pharos).

The standard usage information provided by LabStats is more related to energy spent (utilization of resources), so in an effort to simplify depiction of usage, the following charts will use the amount of individual logins, rather than resource utilization, to indicate a lab or lectern's usage.

Usage: Lecterns

Usage by Individual Logins

The following chart shows the total amount of individual logins monthly for computers defined as lecterns in UNM buildings around campus during the Spring 2014 semester (data for CTLB lecterns unavailable).

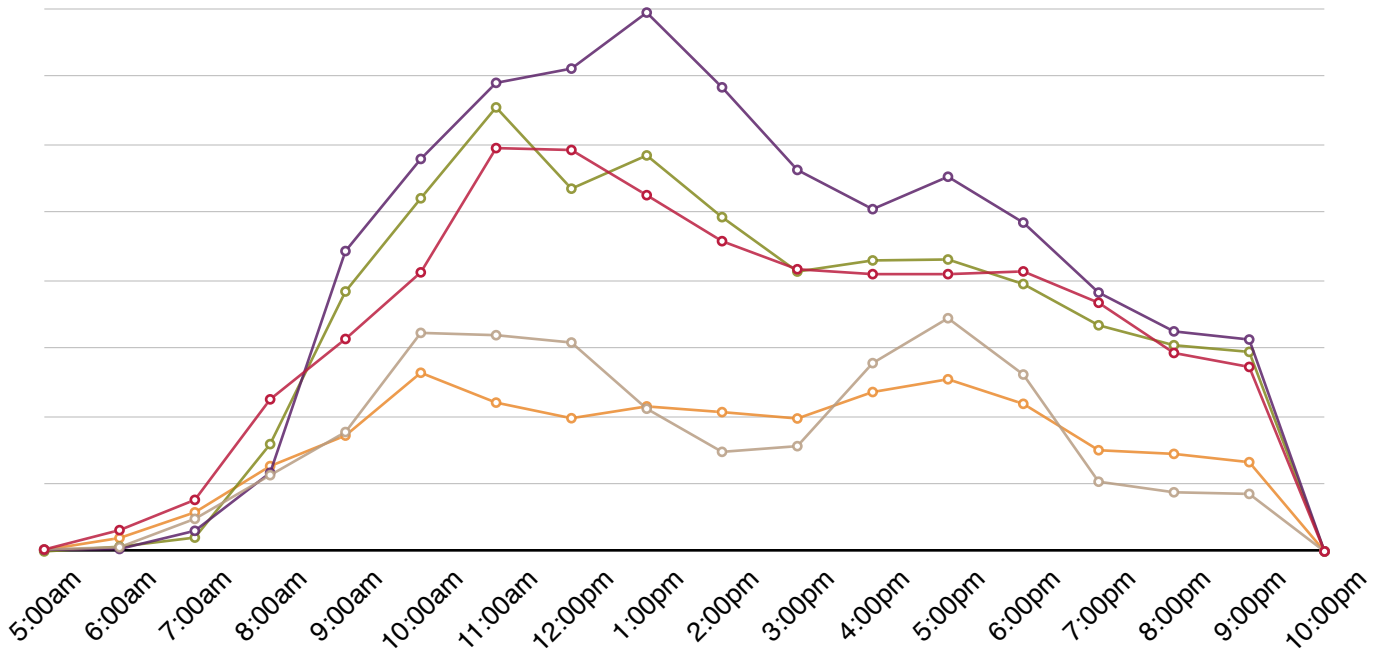


Dane Smith and Mitchell Hall both have the most utilized lecterns on campus. As would be expected, August and December are the least utilized months for all lecterns – both are cut short as the beginning and end of the semesters occur around the middle of the month, and less lecturing is done in December as finals are being taken.

In order to get a more granular look at lectern usage, below is a chart showing the most active login times for the lectern machines at UNM during the Spring 2014 semester (data for CTLB lecterns unavailable).

○ Dane Smith ○ Education ○ Ortega ○ Mitchell ○ Lecterns (Misc.)

Average Hourly Usage for Lectern Computers at UNM

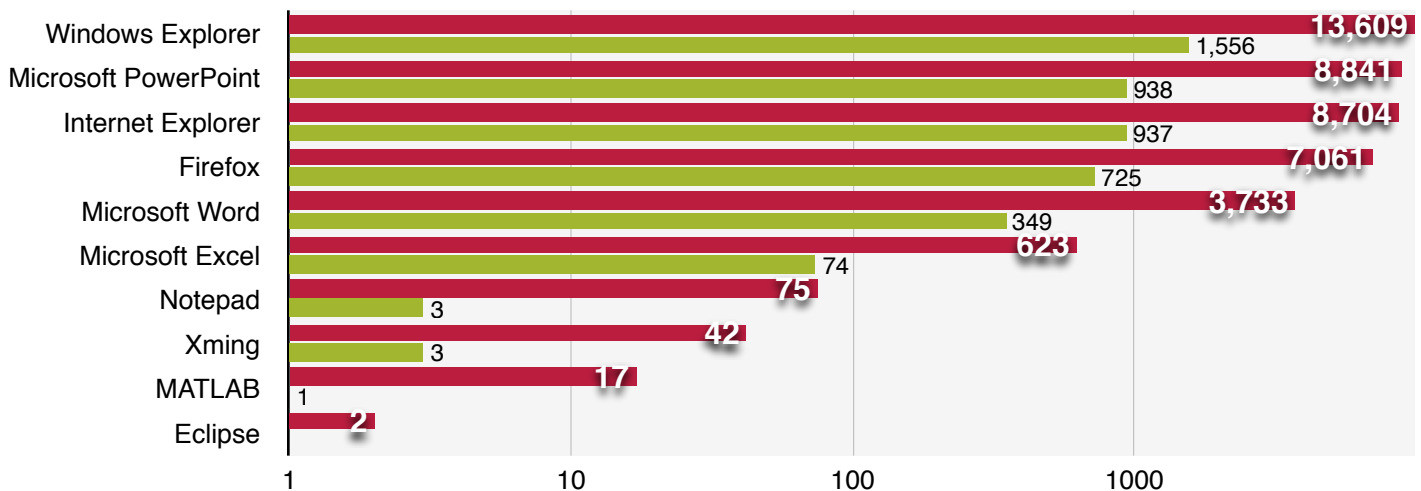


Usage by Application

Below is a chart of the most used applications for the semester by the machines designated as lecterns compared to Fall 2013's data. Data is represented on a **logarithmic** scale to better show all the data. Windows Explorer is the most popular application, most likely because faculty are loading files off USB drives (likely PowerPoint presentations).

■ Spring 2014 ■ Fall 2013

Most Used Applications on Lecterns (by Application Launches)



Usage: Computer Labs

Usage by Individual Logins

The following tables show the total amount of individual logins during Spring 2014 semester by combined computer lab, ordered by popularity. For example, the combined environment of LoboLab would be Macs, PCs, and a classroom in that lab. **Green** indicates maximum values. **Red** indicates minimum values for each column.

Combined Environments

Computer Lab (Combined)	Percentage of Labs Utilized	Number of Logins	Number of Computers	Average Login Per Computer
LoboLab	27.20%	28,889	114	253
Dane Smith Hall (DSH)	23.10%	24,520	118	208
Engineering & Science (ESC) (North)	10.11%	10,737	56	192
Communication & Journalism (C&J)	6.12%	6,507	51	128
Engineering & Science (ESC) (South)	5.20%	5,520	69	80
Mitchell Hall	4.33%	4,598	23	200
Science & Math Learning Center (SMLC)	2.08%	2,174	50	43
IT Lab	1.77%	1,883	24	78

Individual Environments

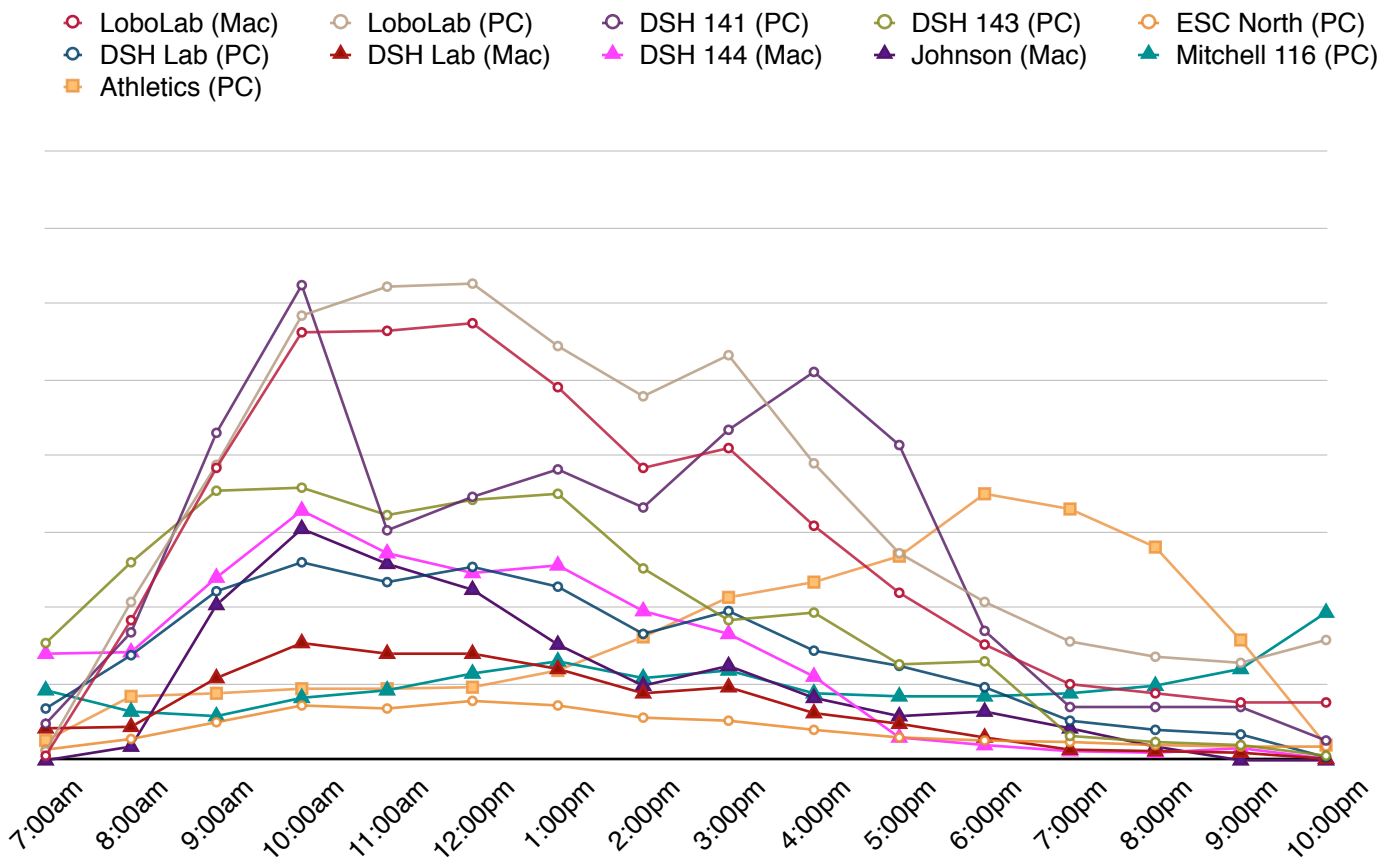
Computer Lab (Individual)	Percentage of Labs Utilized	Number of Logins	Number of Computers	Average Login Per Computer
Athletics	3.61%	3,836	73	53
Student Services Center (SSC)	1.53%	1,625	26	63
Johnson	4.44%	4,715	16	295
Graduate Resource Center	0.91%	970	17	57
Economics	0.73%	775	12	65

The following table shows the total amount of individual logins during Spring 2014 semester by computer lab, broken down by type (Mac or PC), and ordered by popularity. **Green** indicates maximum values. **Red** indicates minimum values for each column.

Computer Lab (by Type of Computer)	Percentage of Labs Utilized	Percentage Change from Fall 2013	Number of Logins	Number of Computers	Average Login Per Computer
LoboLab (Mac)	11.87%	-2.11%	12,606	43	293
LoboLab (PC)	11.73%	2.09%	12,456	34	366
DSH 141 (PC)	8.65%	4.92%	9,182	51	180
DSH 143 (PC)	6.56%	3.47%	6,959	26	268
ESC North (PC)	6.16%	1.12%	6,543	20	327
DSH Lab (PC)	5.46%	1.57%	5,796	10	580
DSH Lab (Mac)	5.46%	3.03%	3,213	26	124
DSH 144 (Mac)	5.16%	1.84%	5,474	26	211
Johnson (Mac)	4.44%	1.02%	4,715	16	295
Mitchell 116 (PC)	4.33%	1.04%	4,598	23	200
Athletics (PC)	3.61%	-0.83%	3,836	73	53
ESC 109 (Mac)	3.34%	2.27%	3,545	21	169
LoboLab Classroom (PC)	3.27%	0.14%	3,472	29	120
C&J (PC)	3.10%	0.19%	3,294	24	137
ESC 110 (PC)	2.49%	0.63%	2,646	21	126
C&J (Mac)	2.05%	-1.84%	2,179	22	99
DSH Hallway Kiosk (PC)	1.95%	-1.77%	2,072	13	159
ESC South (Mac)	1.86%	-7.27%	1,975	48	41
SSC (PC)	1.53%	-2.71%	1,625	26	63
ESC North (Mac)	1.46%	-0.66%	1,548	15	103
SMLC B59 (PC)	1.39%	-1.01%	1,444	25	58
IT Lab (PC)	1.32%	0.25%	1,403	14	100
C&J Hallway Kiosk (Mac)	0.97%	N/A	1,034	5	207
Graduate Resource Center (Mac & PC)	0.91%	0.05%	970	17	57
Economics (PC)	0.73%	0.05%	775	12	65
SMLC B81 (PC)	0.69%	-0.49%	730	25	29
Casas del Rio	0.68%	N/A	724	15	48
DSH 224 (PC)	0.48%	0%	511	18	28
IT Lab (Mac)	0.45%	-0.01%	480	10	48
LoboLab Hallway Kiosk (PC)	0.33%	-0.71%	355	8	44

LoboLab (located in the Student Union Building) ranks as the top location for computer lab usage for the Spring 2014 semester, probably due to the lab being in the area with arguably the most foot traffic on campus. The graph on the next page will show more granularity with when these labs are being utilized.

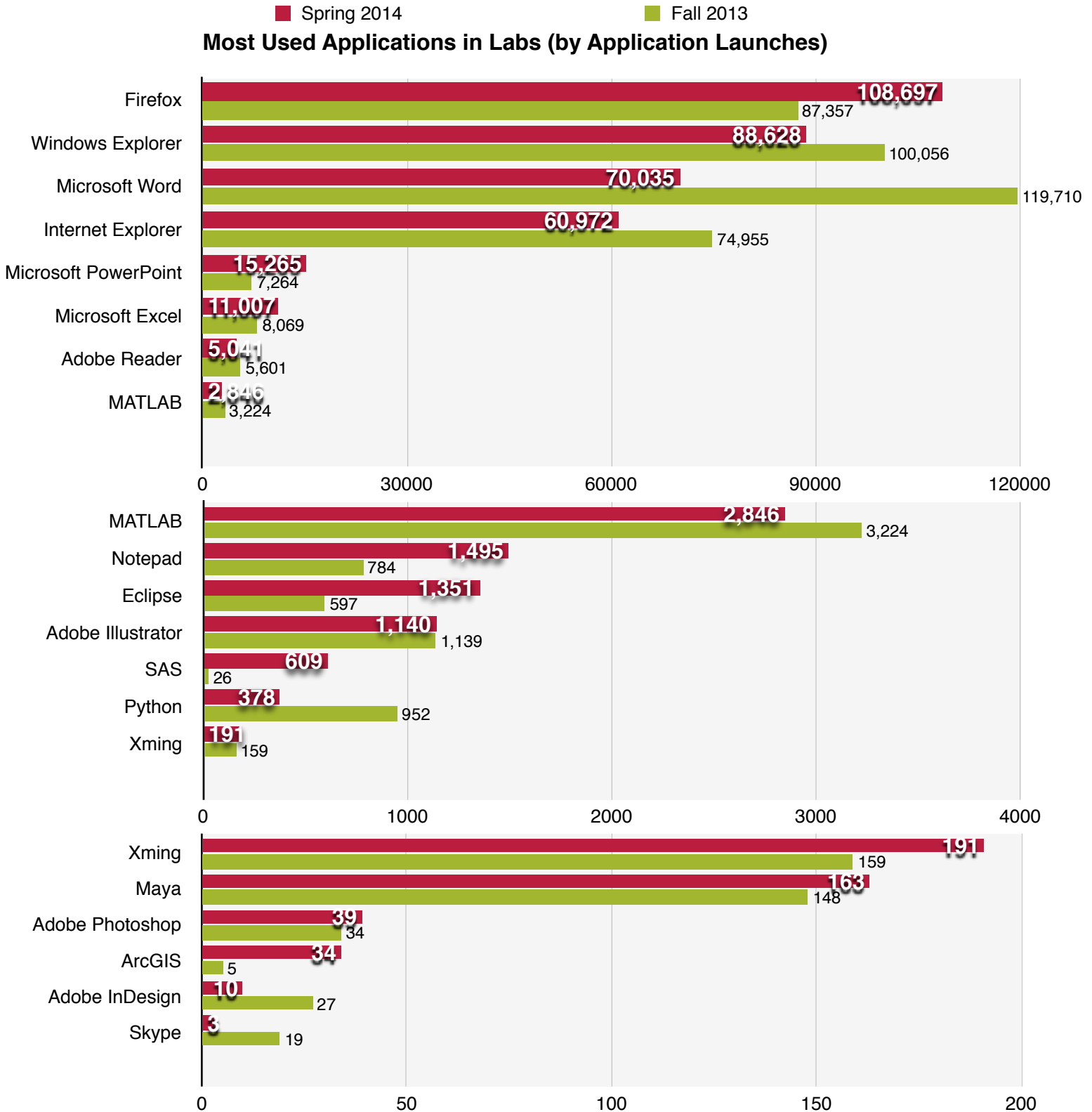
The following graph is a daily, hourly breakdown of average login history for the top ten computer labs during the Spring 2014 semester. Athletics, while not in the top ten, has been added to show the uptake of usage in the evening hours.



As can be seen, the most active usage of these computer labs is from 8:00am to about 3:00pm. There's also a noticeable pickup in Athletics' usage in the evening.

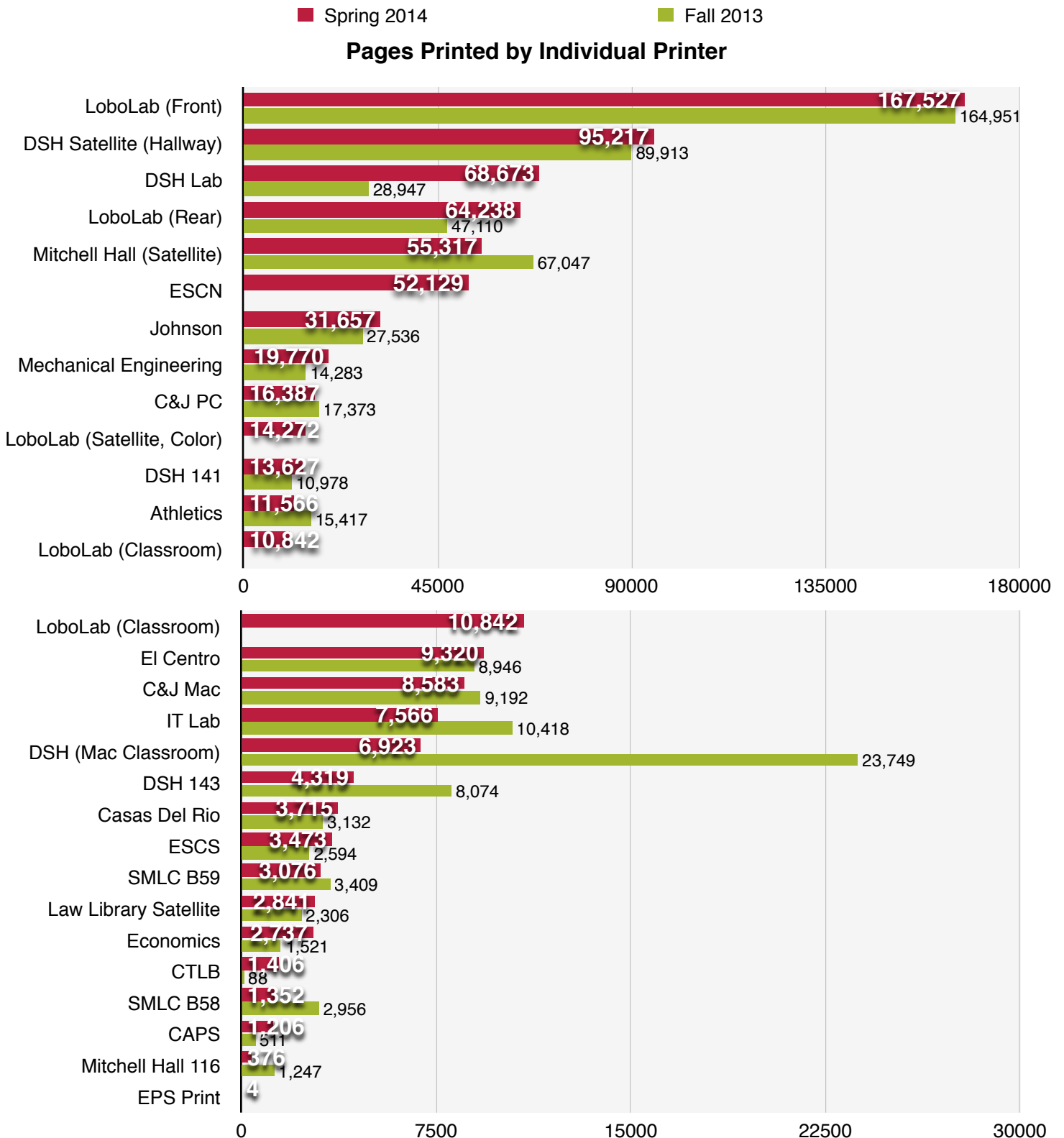
Usage by Application

Below is a chart of the most used applications for the semester by the machines designated as computer labs/classrooms. This data is broken up into several charts to better show the granularity of the data and compared to Fall 2013's data.



PawPrints Usage (Pharos Printing Service)

Below is a chart summarizing the total pages printed during the Spring 2014 semester by printer and is compared to the data for Fall 2013. (Note: Due to hardware changes, there is no data for **ESCN**, **EPS Print**, **LoboLab Satellite**, or **LoboLab Classroom**).



The following is a more detailed breakdown of each printer's output, including number of jobs, total pages, total sheets, total amount charged, and a comparison to Fall 2013. Comparison to some printers in Fall 2013 are not available due to hardware swaps or not existing on the system at that time. **Green** indicates maximum values. **Red** indicates minimum values for each column.

Printer	Jobs	Total Pages	Total Sheets	Amount Charged	Change since Fall 2013
LoboLab (Front)	32,661	167,527	109,502	\$7,231.70	\$196.40
DSH Satellite (Hallway)	19,363	95,217	57,150	\$4,007.97	\$233.07
DSH Lab	12,893	68,673	42,200	\$2,902.64	\$1,681.05
Mitchell Hall (Satellite)	12,076	55,317	33,742	\$2,344.98	-\$486.25
LoboLab (Rear)	11,847	64,238	39,874	\$2,725.21	\$738.83
ESCN	10,018	52,129	32,694	\$2,225.54	N/A
Johnson	6,670	31,657	20,415	\$1,371.63	\$212.02
DSH 141	4,633	13,627	9,175	\$592.74	\$124.76
Mechanical Engineering	4,088	19,770	12,889	\$867.43	\$261.08
C&J PC	3,814	16,387	10,016	\$692.01	-\$42.98
LoboLab (Satellite, Color)	3,105	14,272	10,260	\$2,057.68	N/A
Athletics	2,515	11,566	6,963	\$485.53	-\$163.34
LoboLab (Classroom)	2,296	10,842	6,611	\$457.14	N/A
C&J Mac	2,060	8,583	5,837	\$371.60	-\$28.59
EI Centro	1,933	9,320	5,532	\$390.16	\$10.97
DSH (Mac Classroom)	1,417	6,923	4,742	\$302.55	-\$710.19
IT Lab	1,322	7,566	4,695	\$320.88	-\$115.52
DSH 143	1,219	4,319	2,726	\$184.25	-\$158.10
ESCS	898	3,473	2,393	\$151.37	\$39.31
Casas Del Rio	841	3,715	2,451	\$160.47	\$24.79
Economics	612	2,737	1,717	\$117.80	\$52.25
SMLC B59	551	3,076	1,766	\$127.66	-\$15.26
SMLC B58	378	1,352	881	\$58.18	-\$67.84
Law Library Satellite	279	2,841	1,598	\$117.19	\$23.55
CAPS	204	1,206	789	\$53.96	\$32.27
CTLB	201	1,406	1,032	\$62.82	\$58.84
Mitchell Hall 116	59	376	206	\$15.40	-\$37.66
EPS Print	1	4	2	\$0.16	N/A
Total:	137,954	678,119	427,858	\$30,396.65	\$1,863.46 inc.

As of mid-April 2014, in addition to our printing services, we began offering the PawPrints (Pharos) service on the Law Library multifunction copiers. Below are those copy statistics (from 4/22/2014 - 5/09/2014).

Copier	Jobs	Total Copies	Amount Charged	Change since Fall 2013
Law Library (Downstairs)	447	817	\$105.15	N/A
Law Library (Upstairs)	321	491	\$59.70	N/A
Total:	768	1,308	\$164.85	N/A