



Computer Labs & Lecterns: Fall 2014

Statistics Using LabStats & Pharos Reports

Alexander Roessner, IT Classroom Technologies
The University of New Mexico

Introduction

Below are a series of reports generated by LabStats and Pharos Reports for the Fall 2014 semester (8/01/2014 thru 12/31/2014). These reports cover a range of topics including usage times (both computer labs and lecterns), application usage, and pages printed via PawPrints (Pharos).

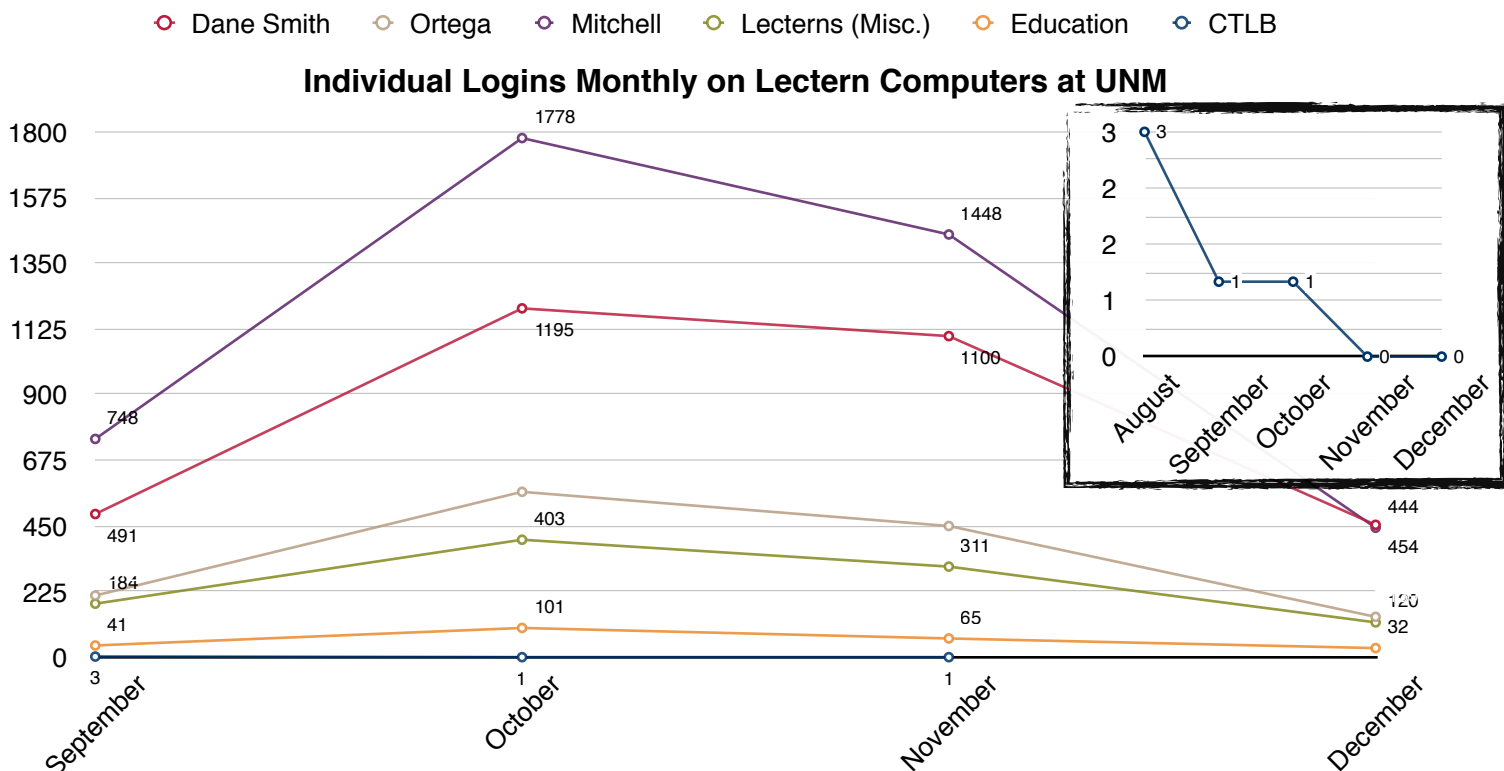
Note: Data from LabStats is unavailable for August 2014 due to a reorganization of workstations in LabStats around late August. Accurate reporting starts in September.

The standard usage information provided by LabStats is more related to energy spent (utilization of resources), so in an effort to simplify depiction of usage, the following charts will use the amount of individual logins, rather than resource utilization, to indicate a lab or lectern's usage.

Usage: Lecterns

Usage by Individual Logins

The following chart shows the total amount of individual logins monthly for computers defined as lecterns in UNM buildings around campus during the Fall 2014 semester (data for a majority of August unavailable).

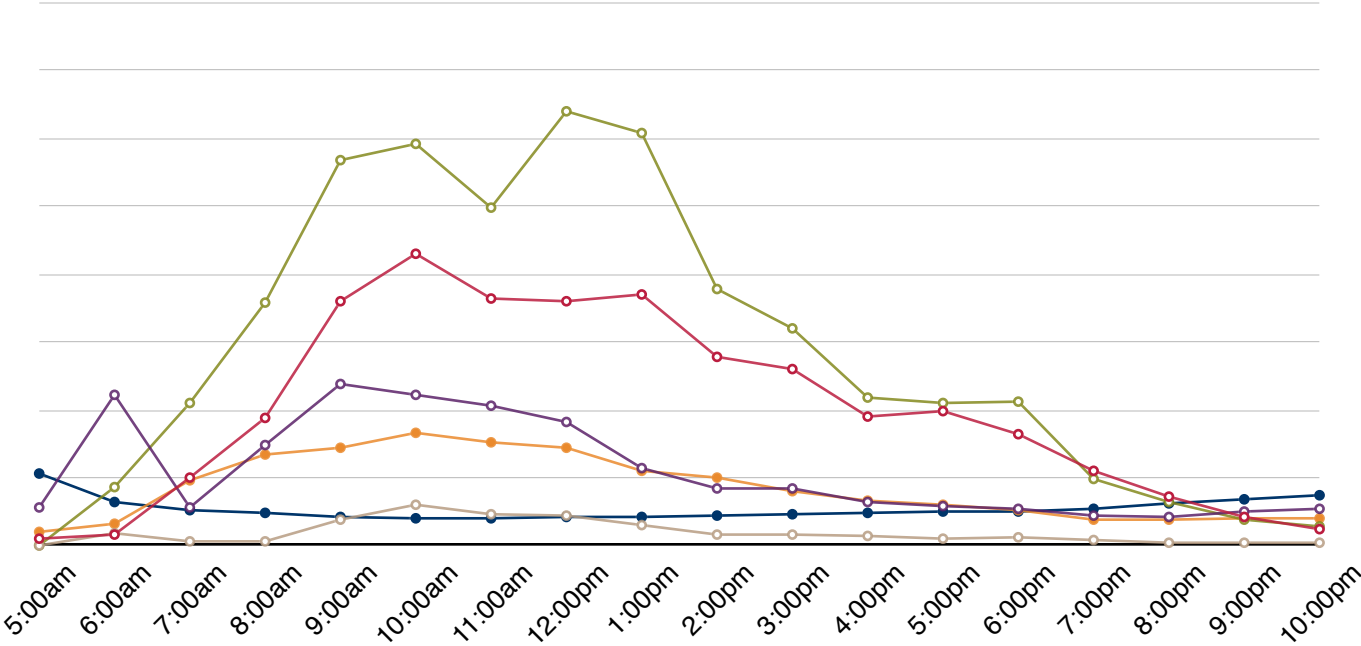


Dane Smith and Mitchell Hall both have the most utilized lecterns on campus. As would be expected, December is the least utilized month for all lecterns. Usage is down because semesters are cut short as the beginning and end of the semesters occur around the middle of the month, and less lecturing is done in December as finals are being taken.

In order to get a more granular look at lectern usage, below is a chart showing the most active login times for the lectern machines at UNM during the Fall 2014 semester.

○ Dane Smith ○ Education ○ Ortega ○ Mitchell ○ Lecterns (Misc.) ● CTLB

Average Hourly Usage for Lectern Computers at UNM

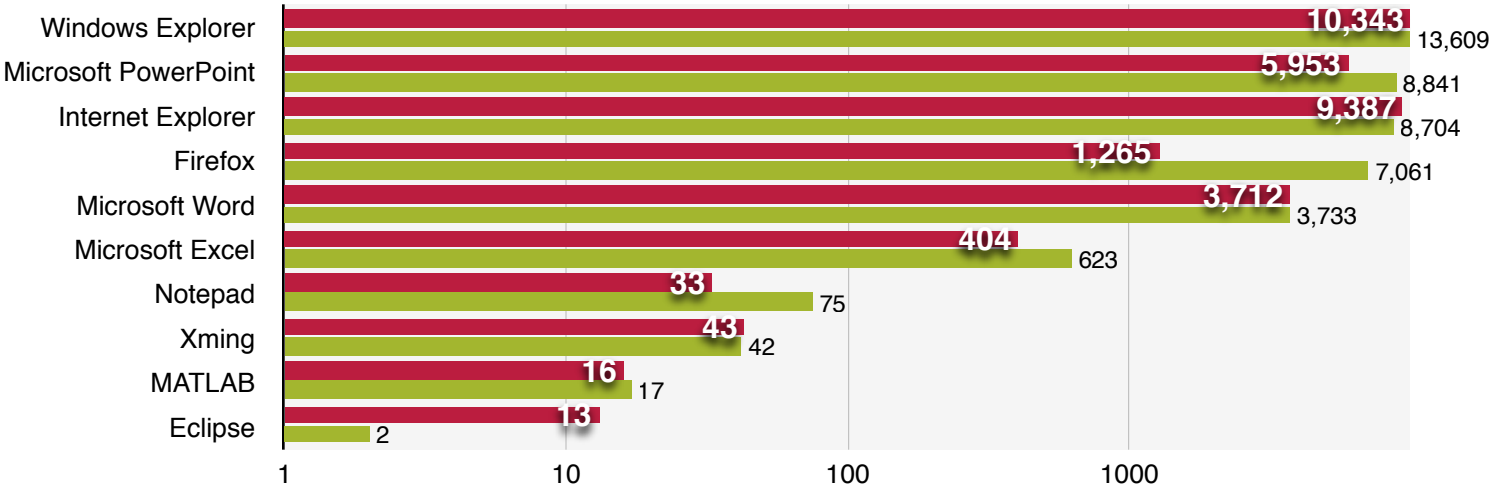


Usage by Application

Below is a chart of the most used applications for the semester by the machines designated as lecterns compared to Spring 2014's data. Data is represented on a **logarithmic** scale to better show all the data. Windows Explorer is the most popular application, most likely because faculty are loading files off USB drives (likely PowerPoint presentations).

■ Fall 2014 ■ Spring 2014

Most Used Applications on Lecterns (by Application Launches)



Usage: Computer Labs

Usage by Individual Logins

The following tables show the total amount of individual logins during Fall 2014 semester by combined computer lab, ordered by popularity. For example, the combined environment of LoboLab would be Macs, PCs, and a classroom in that lab. **Green** indicates maximum values. **Red** indicates minimum values for each column. **Orange** indicates possible reporting errors.

Note: Data reported for computer labs is incomplete due to an unknown error. Number of computers reporting as been added for Fall/Spring 2014 to show how results may be skewed.

Combined Environments

Computer Lab (Combined)	Percentage of Labs Utilized	Number of Logins	Number of Computers Reporting (Spring 2014)	Number of Computers Reporting (Fall 2014)	Average Login Per Computer
LoboLab	36.36%	51,388	114	90	571
Dane Smith Hall (DSH)	21.68%	30,635	118	96	319
Engineering & Science (ESC) (North)	7.43%	10,504	56	66	159
Communication & Journalism (C&J)	1.81%	2,556	51	39	66
Engineering & Science (ESC) (South)	8.30%	11,726	69	41	286
Mitchell Hall	12.72%	17,974	23	30	599
Science & Math Learning Center (SMLC)	1.34%	1,898	50	50	38
IT Lab	1.73%	2,450	24	25	98

Individual Environments

Computer Lab (Individual)	Percentage of Labs Utilized	Number of Logins	Number of Computers Reporting (Spring 2014)	Number of Computers Reporting (Fall 2014)	Average Login Per Computer
Athletics	2.12%	2,997	73	74	41
Student Services Center (SSC)	1.61%	2,280	26	29	79
Johnson	3.63%	5,129	16	11	466
Graduate Resource Center	0.25%	349	17	33*	11
Economics	1.01%	1,433	12	12	119

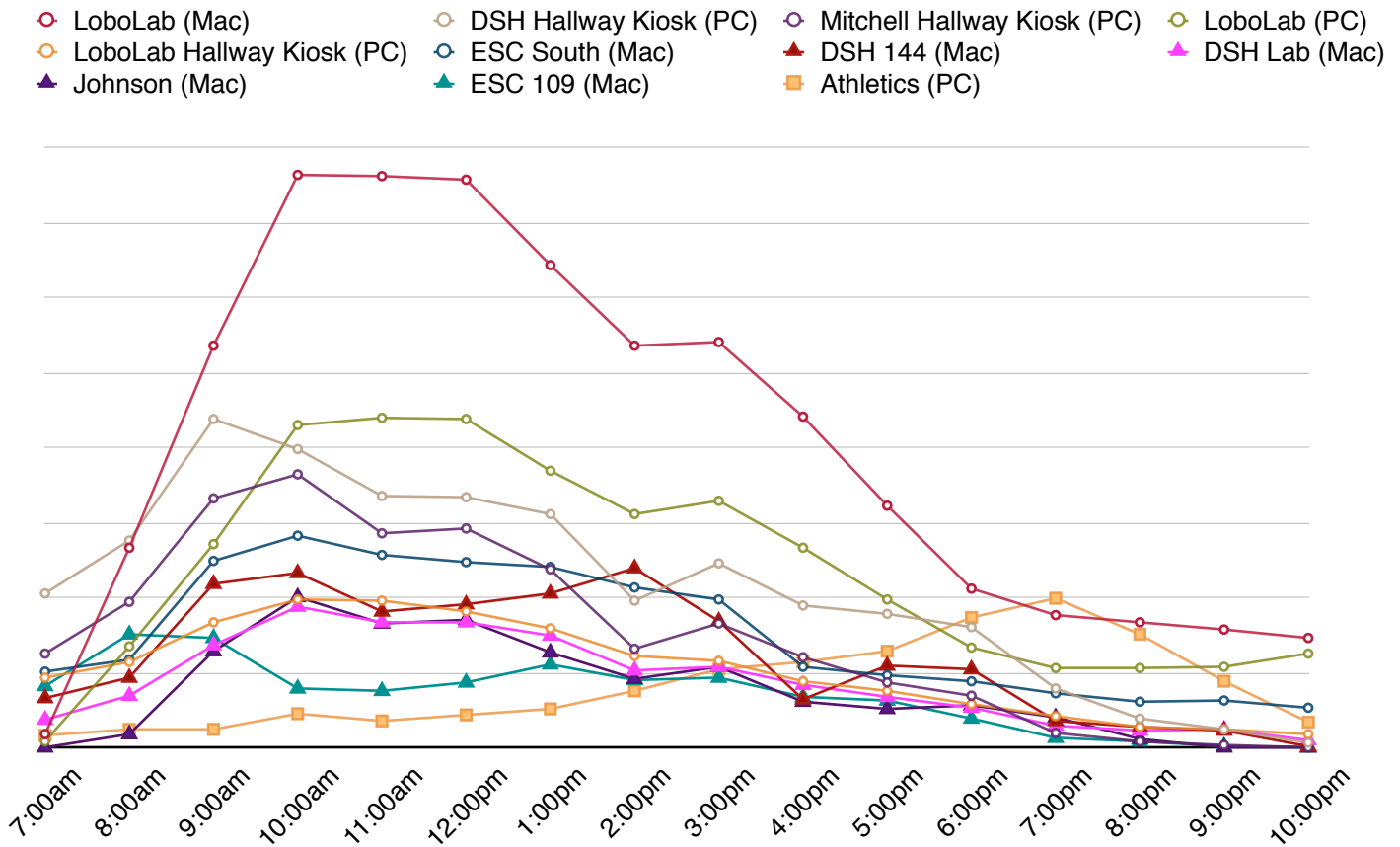
* We took on an additional environment for GRC in 2014. Not a reporting error.

The following table shows the total amount of individual logins during Fall 2014 semester by computer lab, broken down by type (Mac or PC), and ordered by popularity. **Green** indicates maximum values. **Red** indicates minimum values for each column. **Orange** indicates possible reporting errors.

Computer Lab (by Type of Computer)	Percentage of Labs Utilized	Percentage Change from Spring 2014	Number of Logins	Number of Computers Reporting (Spring 2014)	Number of Computers Reporting (Fall 2014)	Average Login Per Computer
LoboLab (Mac)	17.81%	5.94%	25,279	43	43	588
LoboLab (PC)	9.20%	-2.53%	13,057	34	16	816
DSH 141 (PC)	0.19%	-8.46%	266	51	8	33
DSH 143 (PC)	0.07%	-6.49%	96	26	26	4
ESC North (PC)	2.71%	-3.45%	3,844	20	22	175
DSH Lab (PC)	0.05%	-5.41%	78	10	7	11
DSH Lab (Mac)	3.86%	-1.6%	5,477	26	9	609
DSH 144 (Mac)	4.53%	-0.63%	6,431	26	14	459
Johnson (Mac)	3.61%	-0.83%	5,129	16	11	466
Mitchell 116 (PC)	2.73%	-1.6%	3,867	23	24	161
Mitchell Hallway Kiosk (PC)	9.94%	-	14,107	-	6	2,351
Athletics (PC)	2.11%	-1.5%	2,997	73	74	41
ESC 109 (Mac)	3.07%	-0.27%	4,350	21	20	218
LoboLab Classroom (PC)	2.71%	-0.56%	3,852	29	25	154
C&J (PC)	0.73%	-2.37%	1,033	24	12	86
ESC 110 (PC)	2.14%	-0.35%	3,040	21	22	138
C&J (Mac)	1.06%	-0.99%	1,504	22	22	68
DSH Hallway Kiosk (PC)	12.47%	10.52%	17,696	13	13	1361
ESC South (Mac)	5.20%	3.34%	7,376	48	21	351
SSC (PC)	1.61%	0.08%	2,280	26	29	79
ESC North (Mac)	2.55%	1.09%	3,620	15	22	165
SMLC B59 (PC)	0.81%	-0.58%	1,151	25	25	46
IT Lab (PC)	0.95%	-0.37%	1,352	14	15	90
C&J Hallway Kiosk (Mac)	0.01%	-0.96%	19	5	5	4
Graduate Resource Center (Mac & PC)	0.25%	-0.66%	349	17	33	11
Economics (PC)	1.01%	0.28%	1,433	12	12	119
SMLC B81 (PC)	0.53%	-0.16%	747	25	25	30
Casas del Rio	0.41%	-0.27%	588	15	16	37
DSH 224 (PC)	0.42%	-0.06%	591	18	19	31
IT Lab (Mac)	0.77%	0.32%	1,098	10	10	110
LoboLab Hallway Kiosk (PC)	6.48%	6.15%	9,200	8	6	1533

LoboLab (located in the Student Union Building) ranks as the top location for computer lab usage for the Fall 2014 semester, probably due to the lab being in the area with arguably the most foot traffic on campus. The graph on the next page will show more granularity with when these labs are being utilized.

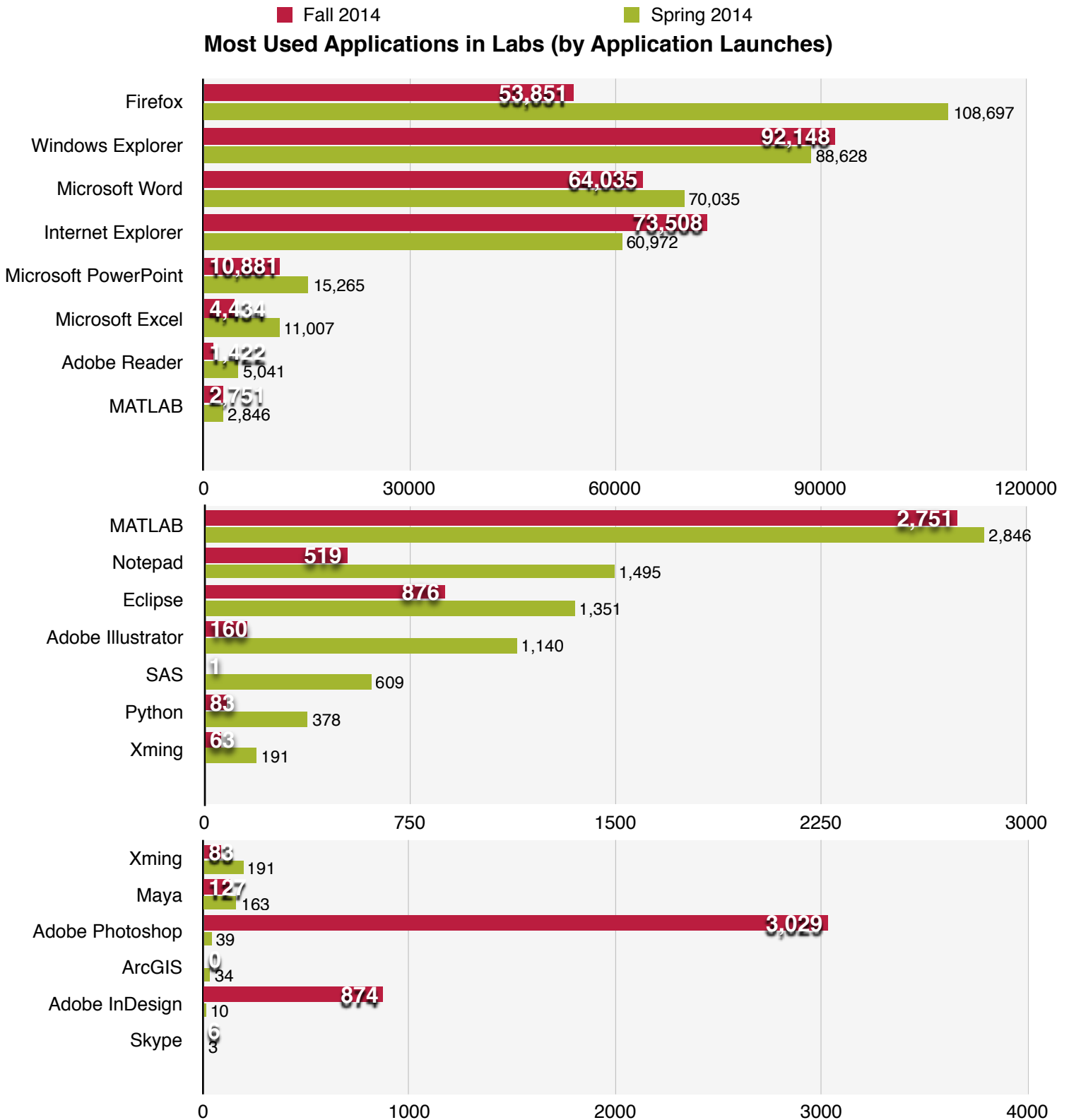
The following graph is a daily, hourly breakdown of average login history for the top ten computer labs during the Fall 2014 semester. Athletics, while not in the top ten, has been added to show the uptake of usage in the evening hours. It should be noted that the most-used labs are the ones containing Macs.



As can be seen, the most active usage of these computer labs is from 8:00am to about 3:00pm. There's also a noticeable pickup in Athletics' usage in the evening.

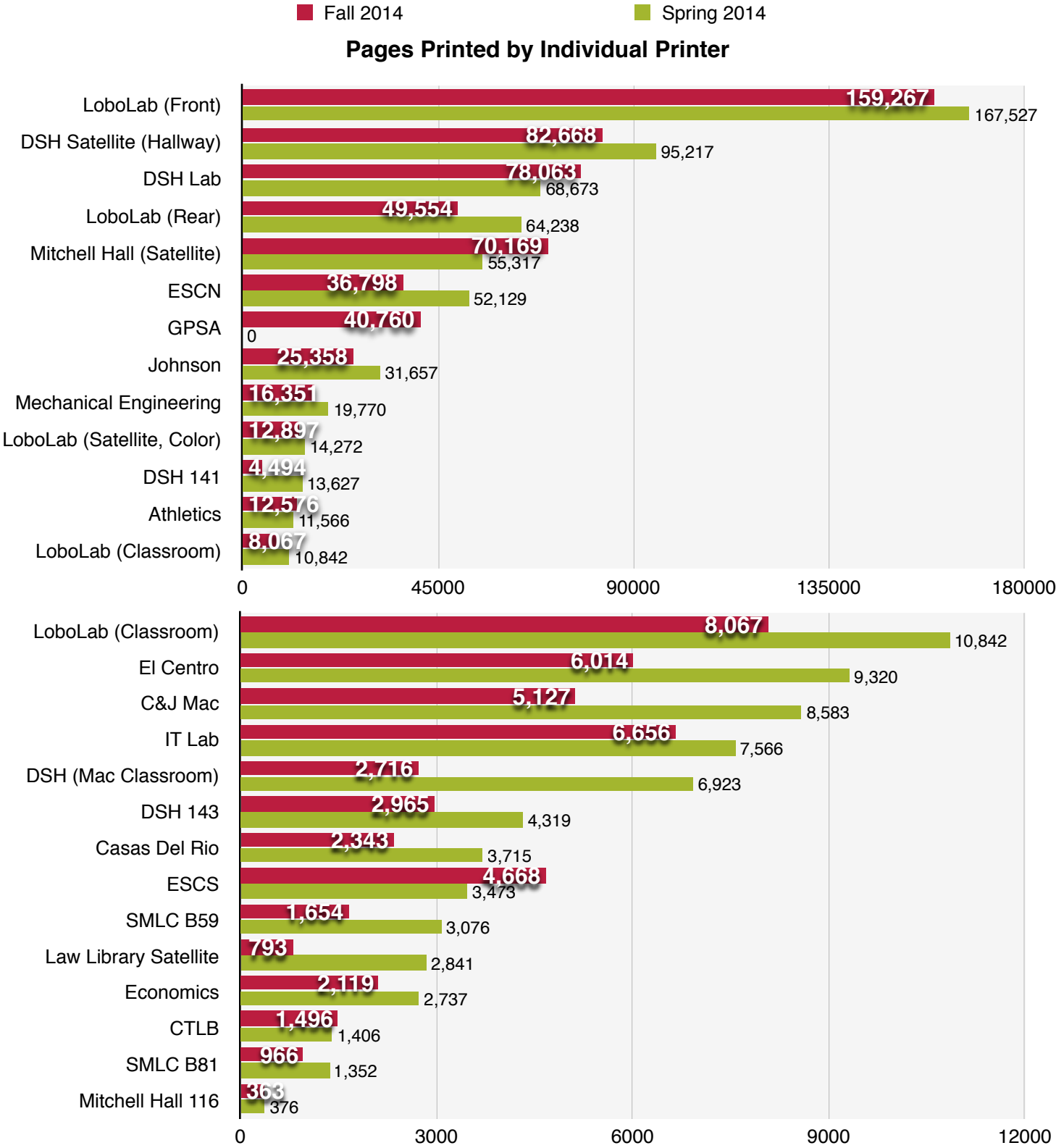
Usage by Application

Below is a chart of the most used applications for the semester by the machines designated as computer labs/classrooms. This data is broken up into several charts to better show the granularity of the data and compared to Spring 2014's data. A lot of variation when compared to Spring 2014 - notably Adobe Photoshop.



PawPrints Usage (Pharos Printing Service)

Below is a chart summarizing the total pages printed during the Fall 2014 semester by printer and is compared to the data for Spring 2014. (Note: No data available for C&J PC, CAPS, or EPS.)



The following is a more detailed breakdown of each printer's output, including number of jobs, total pages, total sheets, total amount charged, and a comparison to Spring 2014. Comparison to some printers in Spring 2014 are not available due to hardware swaps, not existing at the time, or simply not having any jobs printed to them. **Green** indicates maximum values. **Red** indicates minimum values for each column.

Printer	Jobs	Total Pages	Total Sheets	Amount Charged	Change since Spring 2014
LoboLab (Front)	32,763	159,267	116,616	\$7,076.12	-\$155.58
DSH Satellite (Hallway)	17,133	82,668	66,998	\$3,816.89	-\$191.08
DSH Lab	15,740	78,063	58,392	\$3,505.76	\$603.12
Mitchell Hall (Satellite)	16,041	70,169	58,368	\$3,268.10	\$923.12
LoboLab (Rear)	9,457	49,554	38,945	\$2,262.44	-\$462.77
ESCN	7,691	36,798	26,883	\$1,639.36	-\$586.18
GPSA	3,443	40,760	30,034	FREE	-
Johnson	5,499	25,358	17,523	\$1,093.65	-\$277.98
DSH 141	2,016	4,494	4,147	\$215.71	-\$377.03
Mechanical Engineering	3,870	16,351	10,788	\$703.86	-\$163.57
LoboLab (Satellite, Color)	2,339	12,897	7,734	\$2,370.61	\$312.93
Athletics	2,794	12,576	11,500	\$606.53	\$121.00
LoboLab (Classroom)	1,746	8,067	6,196	\$365.43	-\$91.71
C&J Mac	1,330	5,127	3,697	\$225.10	-\$146.50
El Centro	1,308	6,014	5,010	\$280.57	-\$109.59
DSH (Mac Classroom)	744	2,716	1,949	\$120.31	-\$182.24
IT Lab	1,264	6,656	4,731	\$294.30	-\$26.58
DSH 143	918	2,965	2,731	\$142.32	-\$41.93
ESCS	1,313	4,668	3,451	\$206.52	\$55.15
Casas Del Rio	583	2,343	2,095	\$111.99	-\$48.48
Economics	450	2,119	1,950	\$102.57	-\$15.23
SMLC B59	373	1,654	1,394	\$77.50	-\$50.16
SMLC B81	192	966	731	\$43.60	-\$14.58
Law Library Satellite	73	793	462	\$33.03	-\$84.16
CAPS	-	-	-	-	-
EPS	-	-	-	-	-
CTLB	328	1,496	1,399	\$72.73	\$9.91
Mitchell Hall 116	139	363	299	\$16.87	\$1.47
Total:	129,547	634,902	484,023	\$28,651.87	-\$1,744.78 dec.

In addition to our printing services, we began offering the PawPrints (Pharos) service on the Law Library multifunction copiers. Below are those copy statistics for Fall 2014.

Copier	Jobs	Total Copies	Amount Charged	Change since Spring 2014
Law Library (Downstairs)	4,589	7,030	\$907.20	\$802.05
Law Library (Upstairs)	3,828	4,359	\$590.55	\$530.85
Total:	8,417	11,389	\$1,497.75	\$1,332.90 inc.